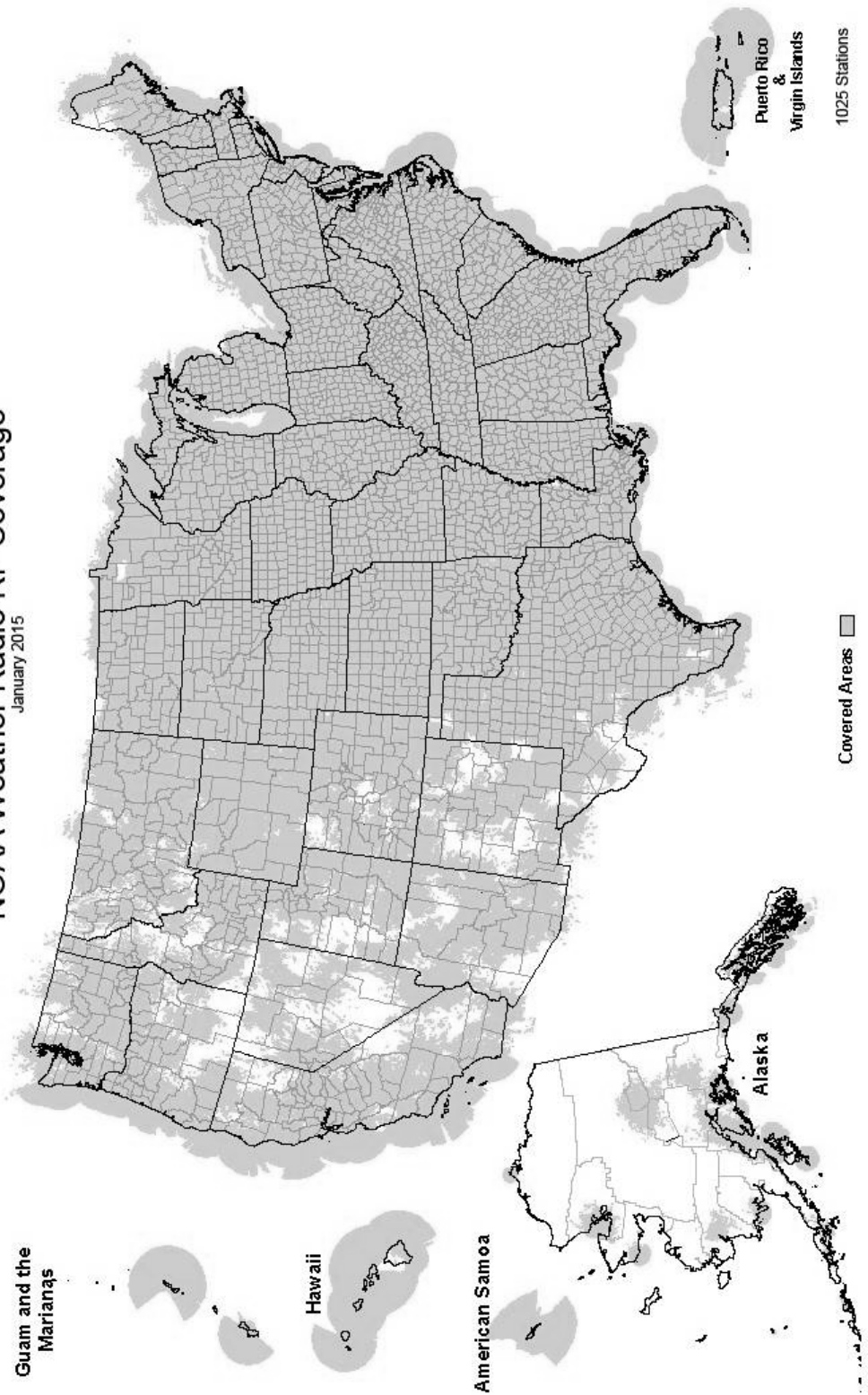


NOAA Weather Radio RF Coverage
January 2015



**The Voice of NOAA's
National Weather Service**

< Over 1000 Transmitters >

**Broadcasting Continuous
Weather Information on the
Following Frequencies:**

- 162.400 MHz
- 162.425 MHz
- 162.450 MHz
- 162.475 MHz
- 162.500 MHz
- 162.525 MHz
- 162.550 MHz



NOAA/PA 94062
Rev January 2015

U.S. Department of Commerce
National Oceanic and Atmospheric Administration
National Weather Service

<http://www.weather.gov/nwr/>

NOAA WEATHER RADIO

The Voice of NOAA's National Weather Service

<http://www.weather.gov/nwr>

NOAA Weather Radio is a service of the National Oceanic and Atmospheric Administration (NOAA) of the U.S. Department of Commerce. As the "voice of the National Weather Service," it provides continuous broadcasts (24 hours a day) of the latest weather information from local National Weather Service offices. Weather messages are repeated every 4 to 6 minutes and are routinely updated every 1 to 6 hours or more frequently in rapidly changing local weather or if a nearby natural hazardous or manmade condition exists.



The regular broadcasts are specifically tailored to weather information needs of the people within the service area of the transmitter. For example, in addition to general weather information, stations in coastal areas provide information of interest to mariners. Other specialized information, such as hydrological forecasts and other climate data may be broadcast.

During severe weather, National Weather Service forecasters can interrupt the routine weather broadcasts and insert special warning messages concerning imminent threats to life and property. The forecaster can also add special signals to warnings that trigger "alerting" features of specially equipped receivers. In the simplest case, this signal activates audible or visual alarms, indicating that an emergency condition exists within the broadcast areas of the station being monitored, and alerts the listener to turn up the volume and stay tuned for more information. More sophisticated receivers are automatically turned on and set to an audible volume when an alert is received.

In the most sophisticated alerting system, NOAA Weather Radio Specific Area Message Encoding (SAME), digital coding is employed to activate only those special receivers programmed for specific emergency conditions in specific area, typically a county. SAME can activate specially equipped radio and cable television receivers and provide a short text message that identifies the location and type of emergency. SAME is the primary activator for the FCC Emergency Alert System (EAS).

To program NWR SAME receivers with the proper county(s) and marine area(s) of choice, you need to know the 6-digit SAME code number(s) for that county(s). Once you have your code number(s), follow the manufacturer's directions for programming your NWR SAME receiver. You can obtain your SAME code numbers by dialing:

888-NWR-SAME (888-697-7263) – Voice & TTY/TTD Accessible

Under a January 1975 White House policy statement, NOAA Weather Radio was designated the sole Government-operated radio system to provide direct warning into private homes for both

RHODE ISLAND	Brownsville	162.550	Coalville/ Park City	162.475	Greggs Knob	162.500
Providence	Bryan	162.550	Escalante	162.425	Hinton	162.425
	Burkeville	162.425	Lake Powell	162.550	Monterville	162.525
SOUTH CAROLINA	Carrizo Springs	162.550	Logan	162.400	Moorefield	162.400
Aiken	Center	162.525	Manti	162.425	Morgantown	162.475
Aynor	Childress	162.525	Milford/Cedar City	162.400	Sutton	162.450
Barnwell	Cisco	162.500	Moab	162.475		
Beaufort	Coleman	162.475	Monticello	162.450	WISCONSIN	
Charleston	Corpus Christi	162.550	Salt Lake City	162.550	Ashland	162.525
Cheraw	Corsicana	162.525	St. George	162.475	Baraboo	162.450
Columbia	Cumby	162.500	Tabiona	162.550	Black River Falls	162.500
Cross	Dallas	162.400	Tooele (South Mountain)	162.450	Coloma	162.400
Florence	Del Rio	162.400	Tooele (Vernon Hills)	162.525	Crandon	162.450
Georgetown	D'Hanis	162.525	Vernal	162.400	Dubuque	162.400
Greenville	Dickens	162.500	Wendover	162.475	Fond Du Lac	162.500
Jasper County	Dilley	162.500			Green Bay	162.550
Kirksey	El Paso	162.475	VERMONT		Gresham	162.500
Orangeburg	El Paso Spanish	162.550	Burlington	162.400	Janesville	162.425
Rock Hill	Fort Worth	162.550	Castleton	162.500	Ladysmith	162.550
Sumter	Galveston	162.550	Marlboro	162.425	Madison	162.550
	Gilmer	162.425	St. Johnsbury	162.425	Menomonie	162.400
SOUTH DAKOTA	Gonzales	162.525	Windsor	162.475	Milwaukee	162.400
Aberdeen	Guadalupe Mt Nat'l. Park	162.525			New London	162.525
Arlington	Harlingen Spanish	162.450	VIRGIN ISLANDS		Park Falls	162.500
Faith	Junction	162.475	St. Croix	162.500	Prairie Du Chien	162.500
Firesteel	Kerrville	162.450			Racine	162.450
Hot Springs	La Grange	162.500	VIRGINIA		Rhineland	162.400
Lead	Laredo	162.550	Accomack	162.525	Richland Center	162.475
Lowry	Llano	162.425	Covesville	162.450	Sheboygan	162.525
Mitchell	Lubbock	162.400	Fredericksburg	162.425	Sister Bay	162.425
Philip	Lufkin	162.550	Heathsville	162.400	Spooner	162.475
Pickstown	Marietta	162.525	Lynchburg	162.550	Tomah	162.525
Pierre	Miami	162.450	Manassas	162.550	Wausau	162.475
Porcupine	Midland/Odessa	162.400	Norfolk	162.550	Wausaukee	162.400
Rapid City	Milano	162.525	Richmond	162.475	Winona	162.425
Reliance	Mineral Wells	162.525	Roanoke	162.475	Withee	162.425
Sioux Falls	Muenster	162.425	Sand Mtn.	162.450		
South Shore	New Taiton	162.450	South Boston	162.525	WYOMING	
Wessington	Onalaska	162.500			Afton	162.425
White River	Ozona	162.500	WASHINGTON		Casper	162.400
	Palestine	162.450	Astoria	162.400	Cheyenne	162.550
TENNESSEE	Paris	162.550	Capitol Peak	162.475	Cody	162.400
Bristol	Pecos	162.450	Cle Elum	162.400	Dubois	162.450
Centerville	Perryton	162.475	Davis Peak	162.525	Elk Plaza	162.425
Chattanooga	Pharr	162.400	Dayton	162.525	Evanston	162.450
Clarksville	Pharr Spanish	162.475	Forks	162.425	Gillette	162.500
Clifton	Plainview	162.450	H Street - Blaine Area	162.525	Glendo	162.450
Cookeville	Port O'Connor	162.475	Neah Bay	162.550	Grant Village	162.450
Dyersburg	Richland Springs	162.525	Okanogan	162.525	Jackson	162.525
Hickman	Richmond	162.475	Plymouth	162.425	Kaycee	162.550
Jackson	Rio Grande City	162.425	Puget Sound Marine	162.425	Kemmerer	162.525
Knoxville	Riviera	162.525	Randle	162.425	Lander	162.475
La Follette	San Angelo	162.550	Richland	162.450	Newcastle	162.475
Lafayette	San Antonio	162.550	Seattle	162.550	Pinedale	162.500
Lawrenceburg	Seguin	162.475	Spokane	162.400	Rawlins	162.425
Lobelville	Seminole	162.425	Wenatchee	162.475	Rock Springs	162.550
Memphis	Sherman	162.475	Spokane	162.400	Sheridan	162.475
Nashville	Stephenville	162.450	Wenatchee	162.475	Thermopolis	162.500
Shelbyville	Summerfield	162.500	Yakima	162.550	Worland	162.525
Spencer	Sweetwater	162.425				
Vale	Texarkana	162.550	WEST VIRGINIA			
Waverly	Three Rivers	162.450	Backbone Mountain	162.450		
Winchester	Throckmorton	162.425	Beckley	162.550		
	Tomball	162.400	Charleston	162.400		
	Tyler	162.475	Clarksburg	162.550		
	Uvalde	162.425	Garfield	162.500		
	Victoria	162.400	Gilbert	162.475		
	Waco	162.475				
	Wichita Falls	162.475				
TEXAS						
Abilene						
Alpine						
Amarillo						
Austin						
Bay City						
Beaumont						
Big Spring						
Borger						
UTAH						
Bear Lake		162.500				
Castle Dale		162.500				

As of January, 2015 NOAA is operating 1026 stations across the United States and its territories.

The National Weather Service requests your assistance in reporting any outages of NOAA Weather Broadcast Stations.

Please use our Toll Free Number (888) 697-7263 or send an Email to nwroutage@noaa.gov to report the outage.

El Dorado Springs.....	162.475	Shubert.....	162.500
Fredericktown.....	162.500	Sidney.....	162.500
Gainesville.....	162.425	Superior.....	162.525
Hannibal.....	162.475	Trenton.....	162.500
Hermitage.....	162.450	Valentine.....	162.450
Jamestown.....	162.425	Yankton.....	162.500
Joplin.....	162.550		
Kahoka.....	162.450		
Kansas City.....	162.550		
La Plata.....	162.525		
Lancaster.....	162.550		
Maryville.....	162.425		
Neosho.....	162.450		
Piedmont.....	162.425		
Springfield.....	162.400		
St. Louis.....	162.550		
Summersville.....	162.475		
Trenton.....	162.500		
Wardell.....	162.525		
West Plains.....	162.525		

MONTANA

Baker.....	162.550		
Belgian Hill.....	162.500		
Billings.....	162.550		
Bozeman.....	162.500		
Broadus.....	162.425		
Browning.....	162.525		
Butte.....	162.550		
Circle.....	162.550		
Dillon.....	162.475		
Ekalaka.....	162.475		
Forsyth.....	162.525		
Glasgow.....	162.400		
Glendive.....	162.475		
Glentana.....	162.525		
Great Falls.....	162.550		
Hardin.....	162.450		
Havre.....	162.400		
Helena.....	162.400		
Jordan.....	162.500		
Kalispell.....	162.550		
Lewistown.....	162.500		
Livingston.....	162.525		
Malta.....	162.475		
Miles City.....	162.400		
Missoula.....	162.400		
Plentywood.....	162.475		
Poplar.....	162.425		
Ryegate.....	162.450		
Scobey.....	162.450		
Winnett.....	162.400		

NEBRASKA

Albion.....	162.500		
Bassett.....	162.475		
Beatrice.....	162.450		
Cambridge.....	162.525		
Chadron.....	162.525		
Columbus.....	162.450		
Grand Island.....	162.400		
Holdrege.....	162.475		
Lexington.....	162.425		
Lincoln.....	162.475		
Merna.....	162.500		
Merriman.....	162.400		
Mullen.....	162.425		
Norfolk.....	162.550		
North Platte.....	162.550		
Omaha.....	162.400		
Ord.....	162.525		
Oshkosh.....	162.525		
Scottsbluff.....	162.475		

Walton.....	162.425		
Watertown.....	162.475		
White Hill.....	162.525		

NORTH CAROLINA

Asheville.....	162.400		
Buck Mountain.....	162.500		
Cape Hatteras.....	162.475		
Chapel Hill.....	162.550		
Charlotte.....	162.475		
Ellerbe.....	162.400		
Garner.....	162.450		
Henderson.....	162.500		
Linville.....	162.450		
Mamie.....	162.425		
Margarettsville.....	162.450		
Mooreville.....	162.525		
Mount Jefferson.....	162.500		
New Bern.....	162.400		
Robbinsville.....	162.525		
Rocky Mount.....	162.475		
Saint Pauls.....	162.475		
Warsaw.....	162.425		
Windsor.....	162.525		
Winnabow.....	162.550		
Winston-Salem.....	162.400		

NORTH DAKOTA

Bismarck.....	162.475		
Cavalier.....	162.450		
Dickinson.....	162.400		
Fargo.....	162.475		
Fort Ransom.....	162.525		
Grand Forks.....	162.475		
Jamestown.....	162.550		
Langdon.....	162.500		
Minot.....	162.400		
New Town.....	162.525		
Petersburg.....	162.400		
Rolla.....	162.475		
Scranton.....	162.525		
Sheyenne.....	162.525		
Steele.....	162.400		
Webster.....	162.425		
Williston.....	162.550		
Willow City.....	162.450		

NORTHERN MARIANA ISLANDS

Saipan.....	162.550		
-------------	---------	--	--

OHIO

Akron.....	162.400		
Athens.....	162.425		
Bridgeport.....	162.525		
Carey.....	162.525		
Chillicothe.....	162.500		
Cleveland.....	162.550		
Columbus.....	162.550		
Dayton.....	162.475		
Grafton.....	162.500		
High Hill.....	162.475		
Lima.....	162.400		
Mansfield.....	162.450		
Marietta.....	162.400		
New Philadelphia.....	162.425		
Otway.....	162.525		
Sandusky.....	162.400		
Toledo.....	162.500		
Youngstown.....	162.500		

OKLAHOMA

Altus.....	162.425		
Antlers.....	162.400		

Ardmore.....	162.525		
Atoka.....	162.500		
Bartlesville.....	162.425		
Broken Bow.....	162.450		
Chickasha.....	162.450		
Clinton.....	162.525		
Enid.....	162.475		
Grove.....	162.525		
Guymon.....	162.500		
Lawton.....	162.550		
McAlester.....	162.475		
Oklahoma City.....	162.400		
Oktaha.....	162.525		
Ponca City.....	162.450		
Stillwater.....	162.500		
Tulsa.....	162.550		
Wewoka.....	162.550		
Woodward.....	162.500		

OREGON

Bend/Redmond.....	162.500		
Brookings.....	162.550		
Burns Butte.....	162.475		
Cape Blanco.....	162.425		
Carney Butte.....	162.475		
Coos Bay.....	162.400		
Eugene.....	162.400		
Florence.....	162.500		
Fossil.....	162.550		
Heppner.....	162.425		
John Day.....	162.500		
Klamath Falls.....	162.550		
Medford.....	162.400		
Mt Hebo.....	162.525		
Mt. Ashland.....	162.475		
Neahkahnie.....	162.425		
Newport.....	162.550		
Portland.....	162.550		

Reedsport.....	162.525		
Roseburg.....	162.550		
Salem.....	162.475		
Spout Springs.....	162.400		
The Dalles.....	162.400		
Tillamook.....	162.475		

PENNSYLVANIA

Allentown.....	162.400		
Altoona.....	162.425		
Clearfield.....	162.550		
Coudersport.....	162.500		
Erie.....	162.400		
Harrisburg.....	162.550		
Hibernia Park.....	162.425		
Honesdale.....	162.450		
Huntingdon.....	162.525		
Johnstown.....	162.400		
Meadville.....	162.475		
Parker.....	162.425		
Philadelphia.....	162.475		
Pittsburgh.....	162.550		
Punxsutawney.....	162.500		
State College.....	162.475		
Towanda.....	162.525		
Warren.....	162.450		
Wellsboro.....	162.475		
Wilkes-Barre.....	162.550		
Williamsport.....	162.400		

PUERTO RICO

Culebra.....	162.450		
Maricao.....	162.550		
San Juan.....	162.400		

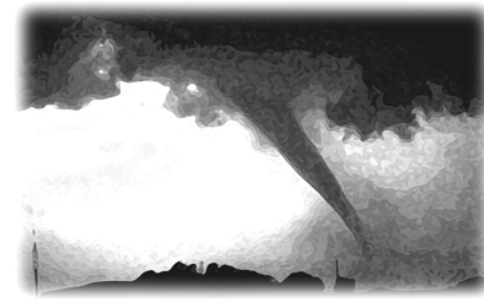
natural disasters and nuclear attack. This concept has been expanded to include warnings for all hazardous conditions that pose a threat to life and safety, both at a local and national level. As a result, NOAA Weather Radio is being better integrated with other National Weather Service systems to provide state and local emergency managers and other warning providers better access to local weather forecast offices, allowing hazard warnings of all types to be broadcast on NOAA Weather Radio within seconds

NOAA Weather Radio currently broadcasts from 1025 stations in fifty states, Puerto Rico, the U.S. Virgin Islands, American Samoa, Guam, and Saipan on seven frequencies in the VHF band, ranging from 162.400 to 162.550 megahertz (MHz). These frequencies are outside the normal AM or FM broadcast bands.

Special radios that receive only NOAA Weather Radio, both with and without special alerting features, are available from numerous manufacturers. In addition, other manufacturers are including NWR capability in a variety of receivers. NOAA Weather Radio capability is currently available on automobile, aircraft, marine, citizens band, and standard AM/FM radios as well as communications receivers, transceivers, scanners, and cable TV.

By nature and design, NOAA Weather Radio coverage is limited to an area within 40 miles of the transmitter. The quality of reception is dictated by transmitter distance, local terrain, and the quality and location of the receiver. In general, those using a high quality receiver on flat terrain or at sea can expect reliable reception beyond 40 miles. Those with standard receivers, surrounded by large buildings in cities and those in mountain valleys may experience little or no reception at considerably less than 40 miles. If possible, a receiver should be tested in the location where it will be used prior to purchase.

NOAA Weather Radio is directly available to a large portion of the U.S. population. The National Weather Service is currently engaged in a program to increase coverage to at least 95 percent of the population.



If you have a question regarding the technical aspects of NOAA Weather Radio such as transmitter location, reception, and characteristics or if you are interested in becoming a partner with the National Weather Service to identify or provide local funding and/or facilities for the installation of a NOAA Weather Radio transmitter, please contact your local National Weather Service Office or send a letter to:

National Weather Service
 Attn: Dissemination Systems Branch, W/OPS17
 1325 East-West Highway
 Silver Spring, MD 20910

The following is a listing of operational stations by state. For specific coverage information for your local area please visit our website at:

<http://www.weather.gov/nwr/>

ALABAMA

Anniston.....	162.475
Arab.....	162.525
Auburn.....	162.525
Birmingham.....	162.550
Brewton.....	162.475
Columbus.....	162.400
Cullman.....	162.450
Demopolis.....	162.475
Dozier.....	162.550
Florence.....	162.475
Greenville.....	162.425
Henagar.....	162.500
Huntsville.....	162.400
Jackson.....	162.500
Louisville.....	162.475
Mobile.....	162.550
Montgomery.....	162.400
Oneonta.....	162.425
Selma.....	162.450
Tuscaloosa.....	162.400
Winfield.....	162.525

ALASKA

Althorp Peak.....	162.425
Anchorage.....	162.550
Barrow.....	162.550
Bede Mountain.....	162.450
Bethel.....	162.550
Cape Fanshaw.....	162.425
Cape Gull.....	162.500
Cape Hinchinbrook.....	162.525
Cold Bay.....	162.425
Cordova.....	162.400
Craig.....	162.475
Dillingham.....	162.500
Duke Island.....	162.450
East Point.....	162.500
Fairbanks.....	162.550
Glennallen.....	162.550
Gravina Island.....	162.525
Haines.....	162.400
Homer.....	162.400
Juneau.....	162.550
Ketchikan.....	162.550
Kodiak.....	162.550
Kotzebue.....	162.550
Manleyville.....	162.500
Marmot Island.....	162.500
Mt. McArthur.....	162.525
Mt. Robert Barron.....	162.450
Nenana.....	162.400
Ninilchik.....	162.550
Nome.....	162.550
Pillar Mtn.....	162.525
Point Pigot.....	162.450
Potato Point.....	162.425
Raspberry Island.....	162.425
Rugged Island.....	162.425
Saint Paul Island.....	162.525
Sand Point.....	162.550
Seward.....	162.550
Sitka.....	162.550
Sitkinak Dome.....	162.450
Soldotna.....	162.475

Sukkwan Island.....	162.425
Tuklung Mtn.....	162.425
Unalaska.....	162.550
Valdez.....	162.550
Wasilla.....	162.400
Whittier.....	162.475
Wrangell.....	162.400
Yakutat.....	162.400
Zarembo Island.....	162.450

AMERICAN SAMOA

Mt. Oloetele.....	162.550
Pago Pago.....	162.400

ARIZONA

Flagstaff.....	162.400
Globe Gila County S.....	162.500
Grand Canyon.....	162.475
Greer.....	162.525
Kingman.....	162.425
Lake Havasu.....	162.400
Nogales.....	162.500
Payson Gila County N.....	162.425
Phoenix.....	162.550
Prescott.....	162.525
Safford.....	162.550
Show Low.....	162.400
Tucson.....	162.400
Window Rock.....	162.550

ARKANSAS

Cherokee Village.....	162.475
El Dorado.....	162.525
Fayetteville.....	162.475
Fort Smith.....	162.550
Fountain Hill.....	162.475
Gurdon.....	162.475
Harrison.....	162.525
High Peak.....	162.425
Jonesboro.....	162.550
Little Rock.....	162.550
Marvell.....	162.525
Mena.....	162.400
Morrilton.....	162.475
Mountain View.....	162.450
Russell.....	162.400
Russellville.....	162.525
Springdale.....	162.400
Star City.....	162.400
Yellville.....	162.500

CALIFORNIA

Avalon.....	162.525
Bakersfield.....	162.550
Big Rock Ridge.....	162.500
Bishop.....	162.425
Coachella.....	162.400
Coachella / Spanish.....	162.525
Contra Costa County.....	162.425
Conway Summit.....	162.525
El Paso Mtns.....	162.425
Eureka.....	162.400
Fresno.....	162.400
Grass Valley.....	162.400
Horse Mtn.....	162.450
Los Angeles.....	162.550
Malibu Marine.....	162.425
Monterey.....	162.550
Monterey Marine.....	162.450
Point Arena.....	162.550
Redding.....	162.550
Sacramento.....	162.550
San Diego.....	162.400

San Diego Marine.....	162.425
San Francisco.....	162.400
San Luis Obispo.....	162.550
San Simeon.....	162.525
Sandberg.....	162.425
Santa Ana.....	162.450
Santa Barbara.....	162.400
Santa Barbara Marine.....	162.475
Sonoma County.....	162.475
Ukiah.....	162.525
Victorville.....	162.500
Yosemite.....	162.450
Yuma.....	162.550

COLORADO

Alamosa.....	162.475
Anton.....	162.450
Bethune.....	162.525
Boyero.....	162.450
Canon City.....	162.500
Colorado Springs.....	162.475
Deer Trail.....	162.500
Denver.....	162.550
Dillon.....	162.400
Durango.....	162.425
Eagle.....	162.450
Fort Collins/Ault.....	162.450
Fort Morgan.....	162.525
Fowler.....	162.425
Franktown.....	162.450
Glenwood Springs.....	162.500
Grand Junction.....	162.550
Greeley.....	162.400
La Junta.....	162.500
Lamar.....	162.525
Mead/Longmont.....	162.475
Montrose.....	162.450
Pueblo.....	162.400
Springfield.....	162.400
Steamboat Springs.....	162.525
Sterling.....	162.400
Walsenburg.....	162.450
Wray.....	162.475

CONNECTICUT

Cornwall.....	162.500
Hartford.....	162.475
Meriden.....	162.400
New London.....	162.550

DELAWARE

Lewes.....	162.550
Salisbury.....	162.475

DISTRICT OF COLUMBIA

Washington DC.....	162.450
--------------------	---------

FLORIDA

Belle Glade.....	162.400
Daytona Beach.....	162.400
East Point.....	162.500
Fort Myers.....	162.475
Fort Pierce.....	162.425
Gainesville.....	162.475
Hialeah Spanish.....	162.500
Inverness.....	162.400
Jacksonville.....	162.550
Key West.....	162.400
Lake City.....	162.400
Largo.....	162.450
Meibourne.....	162.550
Miami.....	162.550
Morriston.....	162.550

Naples.....	162.525
Ocala.....	162.525
Orlando.....	162.475
Palatka.....	162.425
Panama City.....	162.550
Pensacola.....	162.400
Princeton.....	162.425
Salem.....	162.425
Sebring.....	162.500
Sneads.....	162.425
Sumterville.....	162.500
Tallahassee.....	162.400
Tampa Bay.....	162.550
Tea Table Key.....	162.450
Venice.....	162.400
West Palm Beach.....	162.475
Westville.....	162.450

GEORGIA

Americus.....	162.425
Ashburn.....	162.450
Athens.....	162.400
Atlanta.....	162.550
Augusta.....	162.550
Baxley.....	162.525
Blakely.....	162.525
Blue Ridge.....	162.475
Brasstown Bald.....	162.500
Brunswick.....	162.425
Buchanan.....	162.425
Chatsworth.....	162.400
Clayton.....	162.450
Cleveland.....	162.525
Eastman.....	162.400
Eatonton.....	162.525
Jesup.....	162.450
La Grange.....	162.450
Macon.....	162.475
Metter.....	162.425
Pelham.....	162.550
Sandersville.....	162.450
Summerville.....	162.450
Thomaston.....	162.500
Toccoa.....	162.425
Valdosta.....	162.500
Washington.....	162.500
Waycross.....	162.475
Waynesboro.....	162.425

GUAM

Guam.....	162.400
-----------	---------

HAWAII

Hawaii Kai.....	162.400
Kauai.....	162.400
Kulani Cone.....	162.550
Maui.....	162.400
North Kohala.....	162.500
Oahu.....	162.550
South Point.....	162.550

IDAHO

Boise.....	162.550
Bonnors Ferry.....	162.500
Burley.....	162.475
Driggs.....	162.450
Grangeville.....	162.450
Lewiston.....	162.550
McCall.....	162.475
Orofino.....	162.500
Payette.....	162.400
Pocatello.....	162.550

Salmon.....	162.500
Sedgwick Peak.....	162.425
Sun Valley.....	162.450
Twin Falls.....	162.400

ILLINOIS

Bloomington.....	162.525
Champaign.....	162.550
Chester.....	162.450
Chicago.....	162.550
Crescent City.....	162.500
Crystal Lake.....	162.500
DeKalb.....	162.550
Dixon.....	162.525
Freeport.....	162.450
Galesburg.....	162.400
Hillsboro.....	162.425
Jacksonville.....	162.525
Jerseyville.....	162.450
Kankakee.....	162.525
Lockport.....	162.425
Macomb.....	162.500
Marion.....	162.425
McLeansboro.....	162.400
Newton.....	162.450
Odell.....	162.450
Paris.....	162.525
Peoria.....	162.475
Plano.....	162.400
Princeton.....	162.425
Quad Cities.....	162.550
Rockford.....	162.475
Salem.....	162.475
Shelbyville.....	162.500
Springfield.....	162.400

INDIANA

Angola.....	162.425
Bloomington.....	162.450
Edwardsport.....	162.425
Evansville.....	162.550
Fort Wayne.....	162.550
Georgia.....	162.500
Hebron.....	162.450
Indianapolis.....	162.550
Marion.....	162.450
Michigan City.....	162.500
Monticello/Lafayette.....	162.475
Muncie.....	162.425
New Albany.....	162.475
Newport.....	162.425
North Webster.....	162.500
Putnamville.....	162.400
Richmond.....	162.500
Seymour.....	162.525
South Bend.....	162.400

IOWA

Burlington.....	162.525
Carroll.....	162.425
Cedar Rapids.....	162.475
Decorah.....	162.525
Denison.....	162.550
Des Moines.....	162.550
Essex.....	162.550
Fairfield.....	162.400
Forest City.....	162.500
Fort Dodge.....	162.400
Hancock/Pottawattam.....	162.525
Iowa Falls.....	162.525
Lake Rathbun.....	162.425
Lenox.....	162.450
Manchester.....	162.450

Maquoketa.....	162.425
Marshalltown.....	162.500
Milford.....	162.550
Montezuma.....	162.450
Ottumwa.....	162.500
Ringsted.....	162.475
Sanborn.....	162.525
Sioux City.....	162.475
St. Ansgar.....	162.450
Storm Lake.....	162.450
Van Wert.....	162.475
Waterloo.....	162.550

KANSAS

Abilene.....	162.525
Beaumont.....	162.500
Belvidere.....	162.525
Blue Rapids.....	162.425
Chanute.....	162.400
Concordia.....	162.550
Dighton.....	162.525
Dodge City.....	162.475
Ellsworth.....	162.400
Gem.....	162.400
Great Bend.....	162.500
Halls Summit.....	162.425
Hays.....	162.450
Kirwin.....	162.500
Lenora.....	162.425
Meade.....	162.425
Parker.....	162.525
Saint Joseph.....	162.400
Sharon.....	162.400
Topeka.....	162.475
Tribune.....	162.550
Ullyses.....	162.450
Wichita.....	162.550

KENTUCKY

Ashland.....	162.550
Beattyville.....	162.500
Bowling Green.....	162.400
Burkesville.....	162.475
Campbellsville.....	162.525
Covington.....	162.550
East Madison County.....	162.525
Ekron.....	162.450
Elizabethtown.....	162.550
Frankfort.....	162.500
Frenchburg.....	162.475
Harlan.....	162.450
Hazard.....	162.475
Hopkinsville.....	162.450
Horse Cave.....	162.500
Irvine.....	162.475
Jackson.....	162.425
Lexington.....	162.400
London.....	162.475
Madison County.....	162.525
Madisonville.....	162.525
Manchester.....	162.400
Mayfield.....	162.475
Maysville.....	162.425
McKee.....	162.450
Moberly.....	162.525
Monticello.....	162.425
Morehead.....	162.400
Mount Vernon.....	162.425
Owenton.....	162.450
Paintsville.....	162.525
Phelps.....	162.500
Pikeville.....	162.400
Pineville.....	162.525

Somerset.....	162.550
Stanton.....	162.550
West Liberty.....	162.450
West Madison County.....	162.525
Whitesville.....	162.475
Williamsburg.....	162.500

LOUISIANA

Alexandria.....	162.475
Baton Rouge.....	162.400
Bogalusa.....	162.525
Buras.....	162.475
Lafayette.....	162.550
Lake Charles.....	162.400
Monroe.....	162.550
Morgan City.....	162.475
Natchitoches.....	162.500
New Orleans.....	162.550
Shreveport.....	162.400

MAINE

Caribou.....	162.525
Dresden.....	162.475
Ellsworth.....	162.400
Falmouth.....	162.550
Frenchville.....	162.475
Greenville.....	162.425
Jonesboro Marine.....	162.450
Meddybemps.....	162.425
Milo.....	162.550
Springfield.....	162.500
Sugarloaf Mtn.....	162.450

MARYLAND

Baltimore.....	162.400
Frostburg.....	162.425
Hagerstown.....	162.475
Sudlersville.....	162.500

MASSACHUSETTS

Boston.....	162.475
Bourne/Hyannis.....	162.550
Egremont.....	162.450